

An aerial photograph of a lush green forest. In the center, there is a large, irregularly shaped clearing that forms the outline of a paw print. The clearing is filled with water, which appears as a light blue color. The surrounding forest is dense and vibrant green, with some mist or fog visible in the upper and lower corners of the image.

refab<sup>◊</sup>

Revalue, Create, Restart





# A sustainable world

Every year, the construction sector lays several hundred thousand square meters of floors. To produce them, the extraction of tons of raw materials is necessary. However, we have an inexhaustible deposit on our doorstep: is it not time to think differently?

Yes, our waste has value! By reworking them, we will restore the shine to our planet.

It is in this approach that we created REFAB, with the strong ambition of transforming our waste into exceptional soils, thanks to a unique raw material.

After the era of fantastic plastic, make way for virtuous recycled and recyclable floors. And it is into this magnified environment that we invite you to enter with REFAB.

Today you are discovering the brand's first catalog and our first innovation. Others will follow. Because REFAB is a universe, an approach and a commitment. Let's enter remarkable environments together!



## Because it's urgent!

to go beyond sorting or reduction  
garbage.  
to rethink our value system.  
to regenerate the environment.

Artépy creates REFAB to recycle waste  
by the floor while respecting a principle of  
circular economy.



The Artépy teams visiting the industrial site of our partner Le Pavé®

## Artépy, tradition of excellence

30 years ago when they began to distribute new floors exclusively on French territory, the founders of Artépy already brought with them the expertise, know-how and excellence of the floors that they drew from family history. When the new generation takes up the torch, they add environmental commitment. With REFAB, Artépy goes even further. The company is now a publisher of its own floors and displays its ambition: to offer an outlet for our waste.

Artépy, show room - Paris



## With REFAB, the future is paved with virtuous floors

Innovation is at the heart of the REFAB adventure. The brand works in open innovation, backed by the expertise of industrial partners who complement it. It counts on committed players who share the same ambition: to revalue waste with recyclable soils manufactured locally in France.

Artépy, siège social - Mâcon



## Artépy x Le Pavé® : Place your foot on unexplored floor

On the one hand, Le Pavé®, an industrial player which transforms waste collected by its own partners into recyclable raw material designed for buildings.

On the other hand, Artépy is on the lookout for raw materials from reusable waste.

Together, they share the ambition to reinvent a system that is running out of steam.

Several months of experimentation and research to meet uncompromising design requirements have enabled the REFAB blades to be developed.

## Le Pavé®, give a meaning and use for waste

Le Pavé® is the story of a French adventure that chooses to apply the principles of the circular economy and proximity. Le Pavé® today has two factories, one in Aubervilliers, the other in Chalon-sur-Saône. Close to waste collection points. The carbon footprint of the activity is limited to its minimum, and allows for strong regional development.

Le Pavé® thus affirms its industrial strategy and distances itself from traditional hypercentralization, to favor sites on a human scale, more adapted to today's societal and environmental challenges.



«We needed an actor  
reference in floors. Artépy  
was THE reference in this universe:  
it was perfect»

Marius Hametot, Le Pavé®

«We found at Le Pavé®  
passionate actors, who make the connection  
between the world of waste and that  
of the building».

Amélie Hupolox, Artépy®





## The choice of design for floors with character

**A magnificent floor made from waste? We all find it hard to believe it.**

And yet, this is what REFAB puts at your feet. The shards of waste give REFAB slates a “terrazzo” effect, a way of accepting and promoting waste also in their aesthetic. The extra touch of modernity is given by the matte finish. Refab is the asset of remarkable environments.

## A new kind of parquet

Ergonomic installation, resistance to scratches, water and fire attacks, compliance with building standards... REFAB slates have the same installation, maintenance, lifespan and even acoustic comfort characteristics as parquet with some additional advantages such as the possibility of having wall cladding or arrangement panels in the same finish (see technical pages).



# “ ELEGANCE AND EASE OF A PARQUET FLOOR ”

Blades from polystyrene waste  
recognized for their strength  
performance.

## MAIN ASSETS



### 100% RECYCLED

The raw material comes entirely from recycled polystyrene waste from France.



### 100 % RECYCLABLE

When REFAB is removed from a project, it can re-enter the production cycle. It can also be placed at the recycling center in the yellow bin container.



### MADE IN FRANCE

Polystyrene waste is collected in France by recyclers Véolia or Paprec. All production of the finished product (floor boards and panels) is also carried out 100% in France.



### MASSIVE

Produced without binder and resin, REFAB is impact resistant. It can be sanded, chamfered or repaired with the same tools as wood.



### WATER REPELLENT

Made from polystyrene, REFAB is a water-repellent material. Its surface does not allow liquids to penetrate.

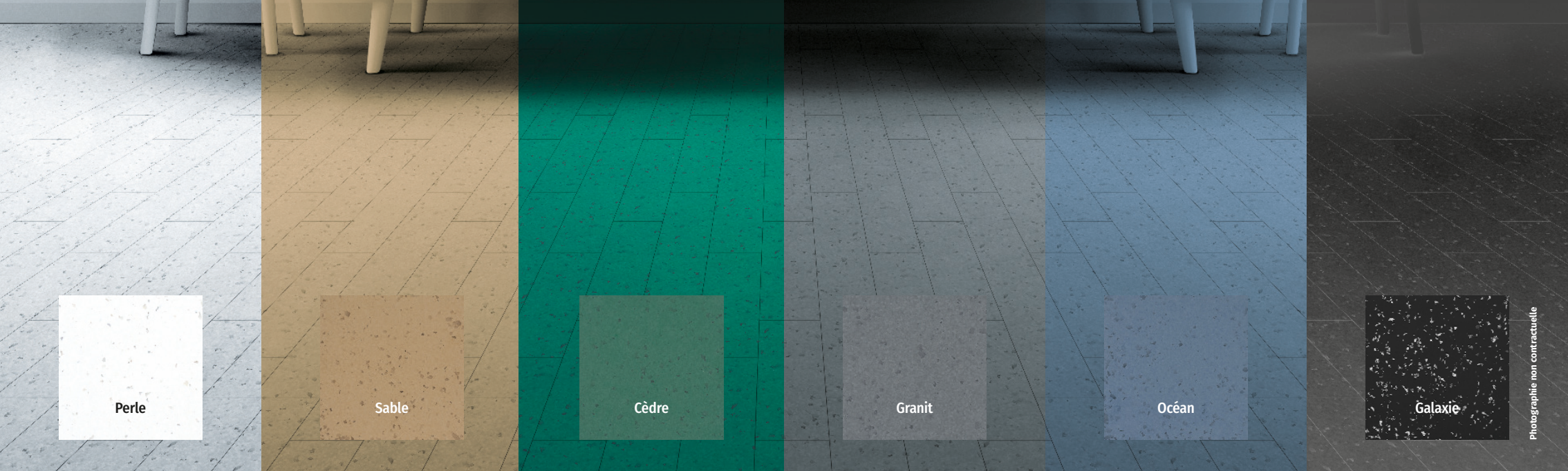


### EASY INSTALLATION & MAINTENANCE

REFAB is simply maintained with water. For more stubborn dirt, choose white vinegar and the use of a microfiber. The floor is laid in a tongue groove, without glue or joints.



# Nuances of possibilities



Perle



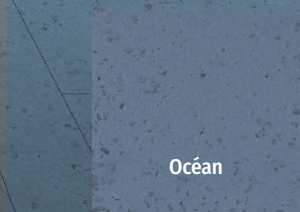
Sable



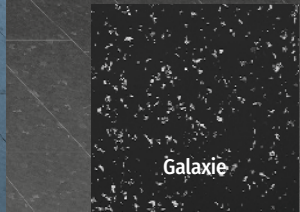
Cèdre



Granit



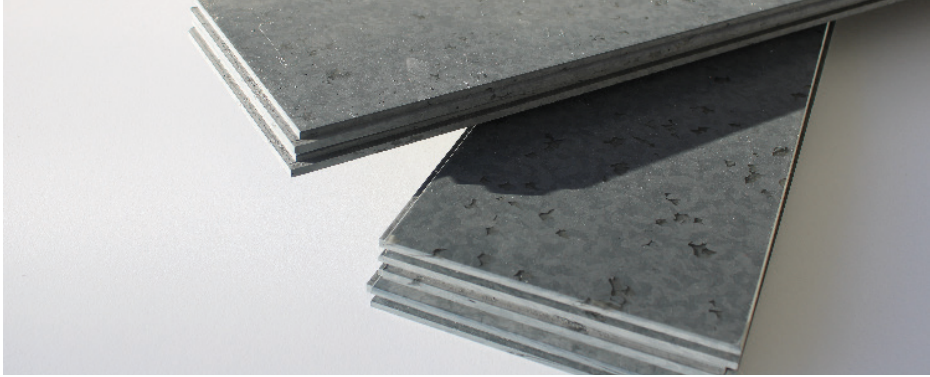
Océan



Galaxie



# FLOOR



Packaging in boxes of 8 slates (1,088 sqm by box.)

## PERLE

Réf : #6201



### Composition :

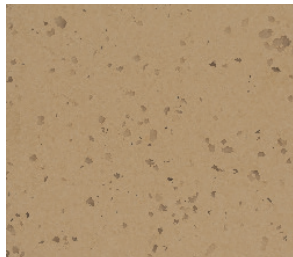
Refrigerator doors, transparent shredded material from industrial production.

### Size :

Length : 80 cm  
width : 17 cm  
Thickness : 10 mm

## SABLE

Réf : #6202



### Composition :

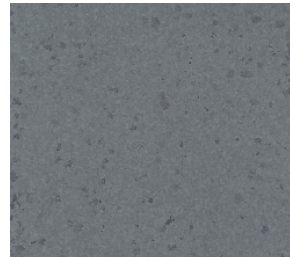
Refrigerator doors, transparent shreds from industrial production, addition of 2% recyclable pigments.

### Size :

Length : 80 cm  
width : 17 cm  
Thickness : 10 mm

## GRANIT

Réf : #6203



### Composition :

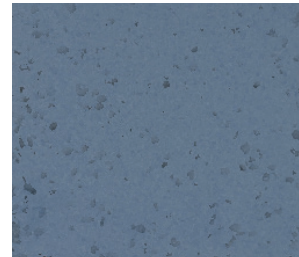
Refrigerator doors, transparent shreds from industrial production, addition of 2% recyclable pigments.

### Size :

Length : 80 cm  
width : 17 cm  
Thickness : 10 mm

## OCÉAN

Réf : #6204



### Composition :

Refrigerator doors, transparent shreds from industrial production, addition of 2% recyclable pigments.

### Size :

Length : 80 cm  
width : 17 cm  
Thickness : 10 mm

## CÈDRE

Réf : #6205



### Composition :

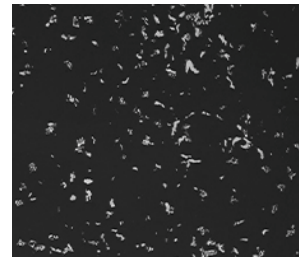
Refrigerator doors, transparent shreds from industrial production, addition of 2% recyclable pigments.

### Size :

Length : 80 cm  
width : 17 cm  
Thickness : 10 mm

## GALAXIE

Réf : #6206



### Composition :

Electrical and electronic equipment (D3E: printers, televisions, household appliances) and industrial production scraps.

### Size :

Length : 80 cm  
width : 17 cm  
Thickness : 10 mm



# PANELS



REFAB offers you two thicknesses of panels :  
8 mm for your wall coverings and 15 mm for worktops and furniture fittings.

## PERLE

Réf 8 mm : #6101  
Réf 15 mm : 6111



### Composition :

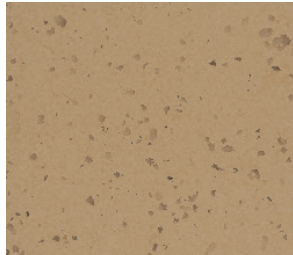
Refrigerator doors, transparent shredded material from industrial production.

### Size :

Length : 240 cm  
width : 135 cm  
Thickness : 8 or 15 mm

## SABLE

Réf 8 mm : #6102  
Réf 15 mm : #6112



### Composition :

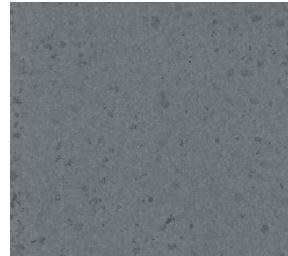
Refrigerator doors, transparent shreds from industrial production, addition of 2% recyclable pigments.

### Size :

Length : 240 cm  
width : 135 cm  
Thickness : 8 or 15 mm

## GRANIT

Réf 8 mm : #6103  
Réf 15 mm : #6113



### Composition :

Refrigerator doors, transparent shreds from industrial production, addition of 2% recyclable pigments.

### Size :

Length : 240 cm  
width : 135 cm  
Thickness : 8 or 15 mm

## CÈDRE

Réf 8 mm : #6105  
Réf 15 mm : #6115



### Composition :

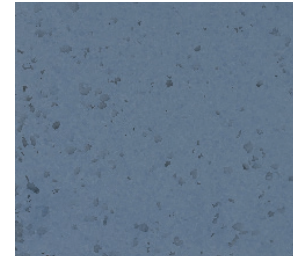
Refrigerator doors, transparent shreds from industrial production, addition of 2% recyclable pigments.

### Size :

Length : 240 cm  
width : 135 cm  
Thickness : 8 or 15 mm

## OCÉAN

Réf 8 mm : #6104  
Réf 15 mm : #6114



### Composition :

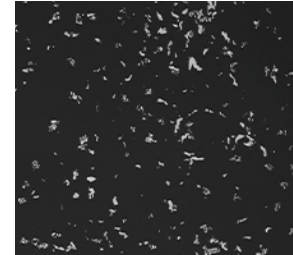
Refrigerator doors, transparent shreds from industrial production, addition of 2% recyclable pigments.

### Size :

Length : 240 cm  
width : 135 cm  
Thickness : 8 or 15 mm

## GALAXIE

Réf 8 mm : #6106  
Réf 15 mm : #6116



### Composition :

Electrical and electronic equipment (D3E: printers, televisions, household appliances) and industrial production scraps.

### Size :

Length : 240 cm  
width : 135 cm  
Thickness : 8 or 15 mm







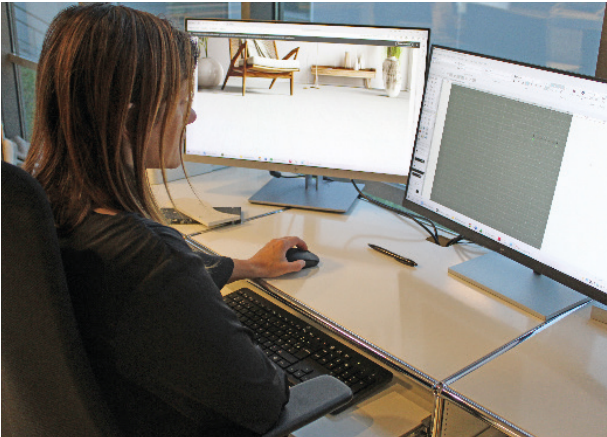
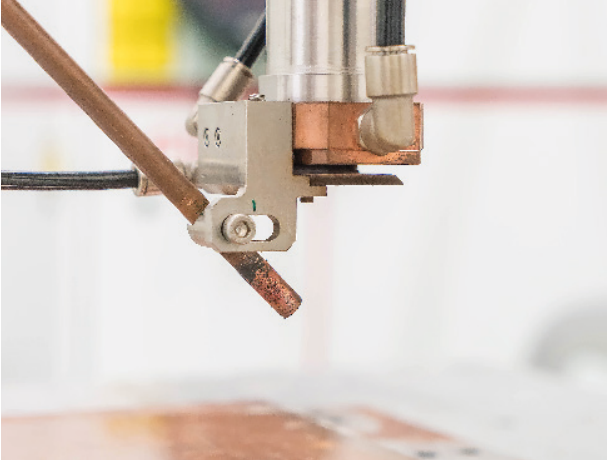
- RESIN FREE
- WITHOUT BINDER
- HEALTHY

**100% RECYCLED**

**100% RECYCLABLE**

**MADE IN FRANCE**





# DESIGN OFFICE

## PERSONNALIZATION

Our design office assists you in all your projects :



Realization of your plans



Layouts



Quantitative calculations



Personnalization

B.E. et manufacturing workshop based in Mâcon (71).



# PERSONNALIZATION

## FLOOR & PANELS



### COLORS PERSONNALIZATION

You can personalize\* the 6 existing colors with different colored chips and thus reinvent your own decor.

\*Personalization available from 100m<sup>2</sup>.



## PANELS

To carry out a unique project, we are at your disposal and support you in carrying out personalized requests on the panels :



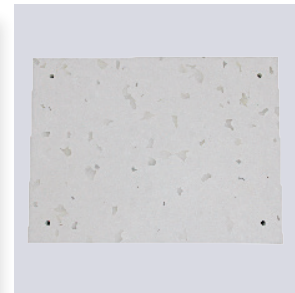
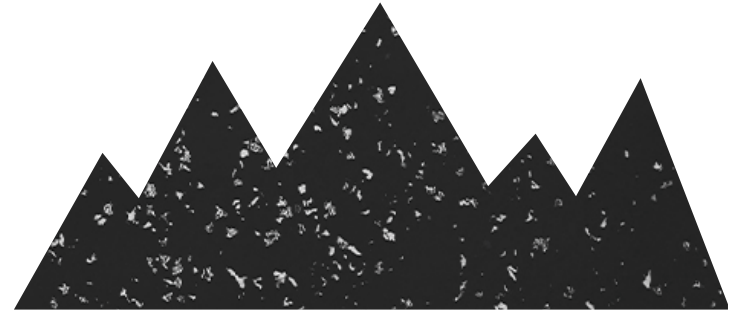
CUTTING



DRILLING



ENGRAVING



# TECHNICAL

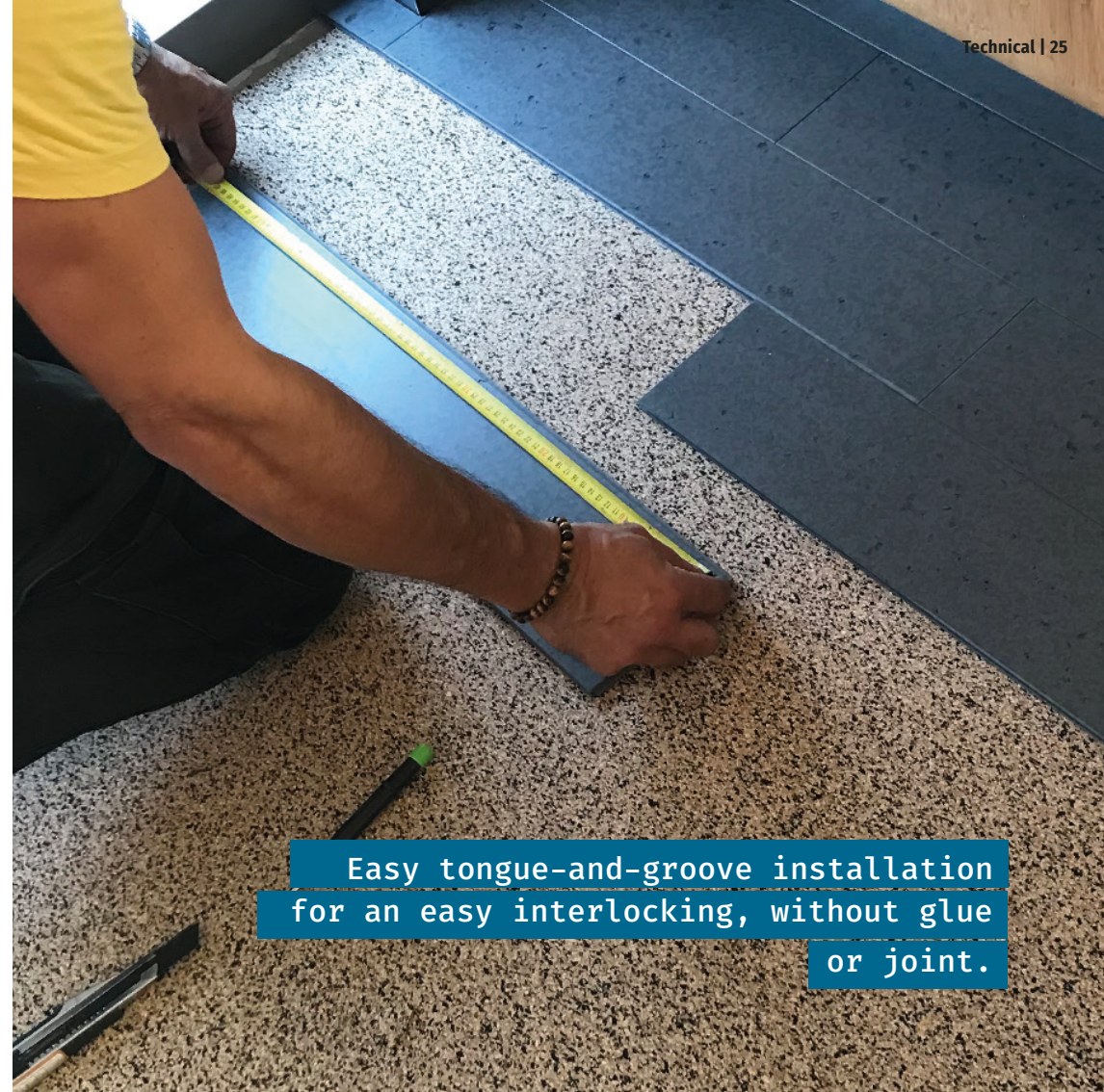
Scan the QR codes and find technical information for the implementation of your project :



TECHNICAL SHEET



INSTALLATION GUIDE



Easy tongue-and-groove installation  
for an easy interlocking, without glue  
or joint.





# PARTNERS COMMITTED TO OUR SIDE





T. +33 3 85 29 11 74

[contact@artepy.fr](mailto:contact@artepy.fr)

**ARTÉPY - SIÈGE SOCIAL**

Espace Entreprise Mâcon-Loché

117 rue Pouilly-Vinzelles

71000 Mâcon (FRANCE)

**SHOW ROOM PARIS**

«L'atelier Artépy»

274 rue Saint-Honoré

75001 Paris (FRANCE)



refab<sup>®</sup>

Revalue, Create, Restart