

# BOLON

LEADER MONDIAL DU SOL VINYLE TISSÉ



SOLS & MURS  
ÉCOLOGIQUES

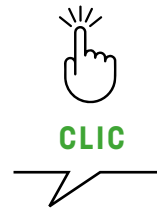
NUANCIER PRODUITS 2024

---

# BOLON

## MENU

---



*COLLECTIONS CLASSE 32*

*COLLECTIONS CLASSE 33*



CLIC

## NOW

ANTHRACITE



102 769 102 819

BRASS



108 078 108 341

CHAMPAGNE



102 767 102 817

COPPER



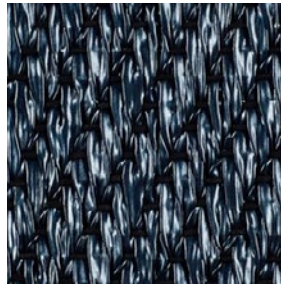
108 077 108 342

SILVER



102 768 102 818

TITANIUM



108 076 108 343



CLIC

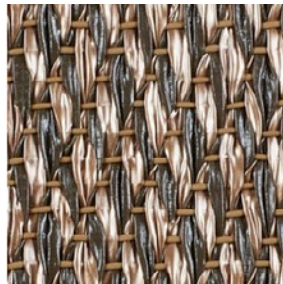
## ETHNIC

ABISKO



102 763 102 807

GABNA



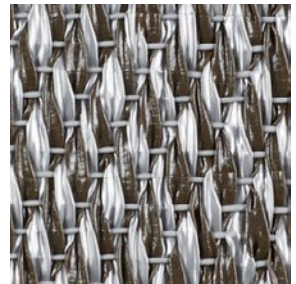
103 562

KAISE



102 762

SAIVO



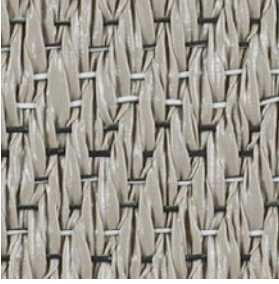
103 559



CLIC

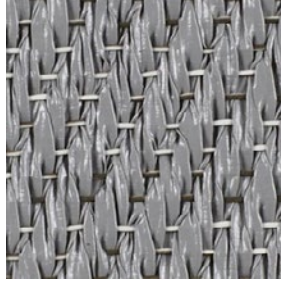
## BOTANIC

CILIA



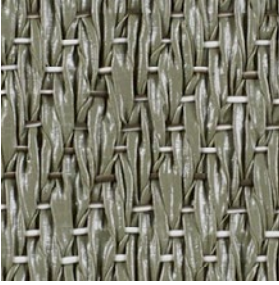
102 673 102 825

OSIER



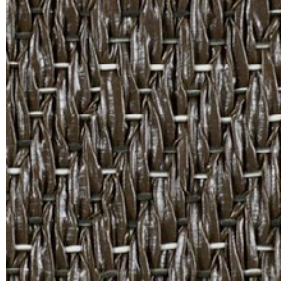
102 674 102 826

SAGE



108 080 108 100

TILIA



102 671 102 823



CLIC

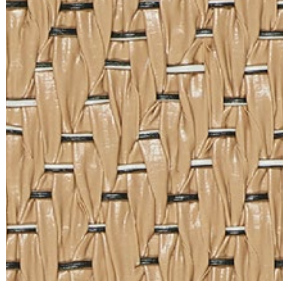
## BOTANIC

BLANCHE



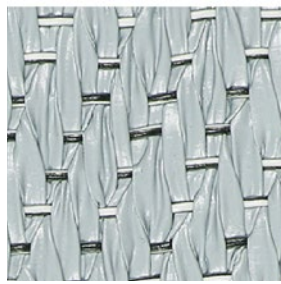
114 154 114 193

HONEY



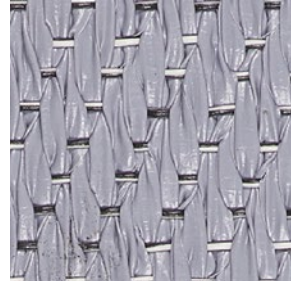
114 155 114 194

SPEARMINT



114 160 114 199

RAIN



114 159 114 198

CANYON



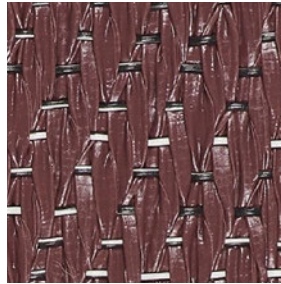
114 158 114 197

VINTAGE



114 157 114 196

CHESNUT



114 156 114 195

LIBRARY



114 161 114 200



CLIC

## BKB

METTALLIC ALPHA



102 757 102 801

SISAL NATUR BLACK



102 755 102 799

SISAL PLAIN BEIGE



102 745 102 791

SISAL PLAIN BLACK



102 753 102 798

SISAL PLAIN GRANITE



102 751 102 796

SISAL PLAIN MOLE



102 749 102 794

SISAL PLAIN SAND



102 748 102 793

SISAL PLAIN STEEL



102 752 102 797







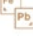

## INFORMATIONS TECHNIQUES CLASSE D'USAGE 32



**BOLON**



### DÉVELOPPEMENT DURABLE : DEPUIS 75 ANS, UN ENGAGEMENT À 100%

-  Fabrication 100% Suédoise
-  100% des collections contiennent des matériaux recyclés
  - 65% dans les rouleaux
  - 72% dans les dalles
  - 69% dans les rouleaux et dalles avec option acoustique
-  100% de PVC biosourcé issu de l'industrie de pâte à papier
  - 100% de craie recyclée issue de dalles de marbre
-  100% Énergie Renouvelable utilisée au cours du processus de production.
-  100% de la production à un impact climatique neutre.
-  100% du sol est sans phtalates
-  100% du sol est exempt de métaux lourds
  - 100% des collections répondent aux exigences les plus strictes en matière d'émissions de COV
-  100% de l'eau de refroidissement utilisée lors la production est en circuit fermé
  - Consommation d'eau = 0.











Émission COV : A+, M1

Floorscore : SCS-FS-02007 et SCS-FS-02240

EPD et FDES : Disponible sur demande

NAAF : Approuvé par l'association Norvégienne pour l'Asthme et les Allergies



|  | STANDARD                               | FEUTRINE ACOUSTIQUE  |   |
|--|--|--|---|
| Classification   | CSTB / UPEC                            | U3 P2 E1/2 C1  |   |
| Garantie   | Garantie fabricant BOLON : 10 ans      |  |   |
| Poids  | ISO 8543                               | rouleaux : 2,8 kg/m <sup>2</sup><br>dalles : 3,8 kg/m <sup>2</sup> | rouleaux et dalles :<br>3,3 - 3,5 kg/m <sup>2</sup> |
| Épaisseur  | ISO 1765                               | rouleaux : 2,4 mm<br>dalles : 2,9 mm                               | rouleaux et dalles :<br>5,1 mm                      |
| Largeur des rouleaux   | EN 426                                 | 2000 mm  |   |
| Longueur des rouleaux  | EN 426                                 | 25 m   |   |
| Dimension des dalles   | EN 994                                 | 500 x 500 mm<br>20 pièces par boîte / 5 m <sup>2</sup>             | 500 x 500mm<br>12 pièces par boîte /3m <sup>2</sup> |
|  Chaises avec roulettes                                    | EN 985                                 | Pour une utilisation en continu                                    |   |
|  Électricité statique                                     | ISO 1815**                             | Conforme aux exigences   |   |
|  Chauffage au sol (résistance thermique)                  | ISO 8302                               | Convient à un chauffage au sol                                     |   |
|  Indice de réduction a ux bruits de chocs ΔL <sub>w</sub> | EN ISO 10140                           | 13 dB*   | 22 dB*  |
|  Coefficient d'absorption acoustique (α <sub>w</sub> )    | EN ISO 354                             | 0,05*  | 0,15*   |
|  Résistance UV  | EN ISO 150-B02                         | 8*   |   |
|  Stabilité dimensionnelle                                 | ISO 2551<br>EN 986                     | Conforme aux exigences   |   |
|  Résistance au feu  | EN 13501-1<br>ASTM E 648<br>ASTM E 662 | B <sub>fl</sub> -s1<br>Classe 1<br>< 450                           |   |
|  Antiglisse   | DIN 51130<br>EN 13893                  | R9<br>> 0,3  |   |
|  Certification CE   | EN 14041                               | N° 0402-CPR-419004   | N° 0402-CPR-419013                                  |
| Fabrication  | Suède                                  |  |   |

\* Valeur usine - \*\* ISO 1815 remplace ISO 6356 - Les dessins de certaines collections sont protégés.

Choix des couleurs : le choix des couleurs et des motifs influe sur l'entretien des sols. Pour les locaux à trafic intense, les entrées, les escaliers, les espaces de bureaux, de circulation, magasins, restaurants, préférer un coloris chiné plutôt qu'un coloris uni, très clair ou très foncé.

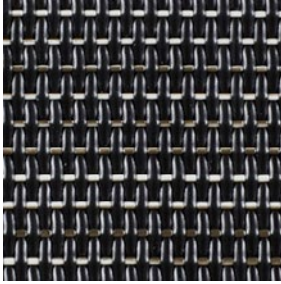
**BOLON est lavable, lessivable, brossable.**



CLIC

## GRAPHIC

ETCH

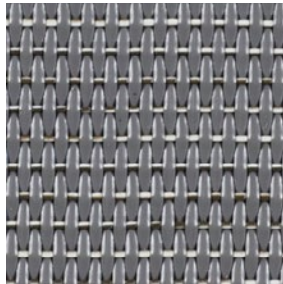


102 773



102 815

STRING

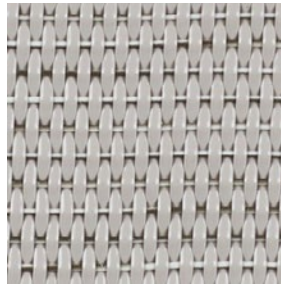


102 772



102 814

MACHE

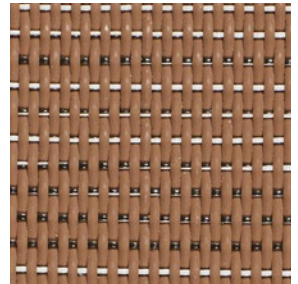


102 770



102 812

TAN

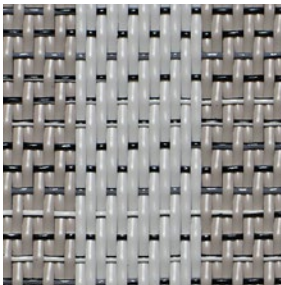


116 455



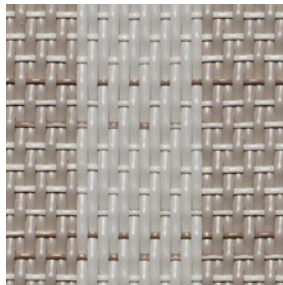
116 457

DUO GREY



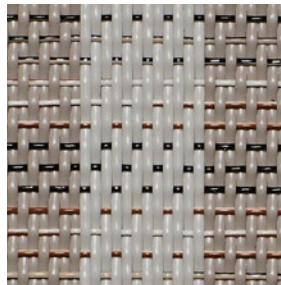
116 643

DUO BEIGE



116 645

DUO CINNAMON



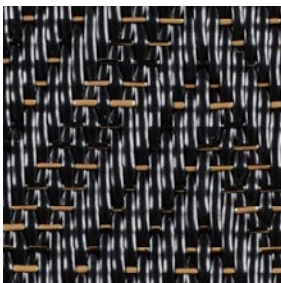
116 644

HERRINGBONE BEIGE



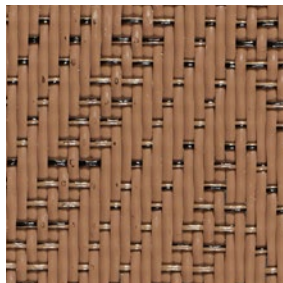
103 226

HERRINGBONE BLACK



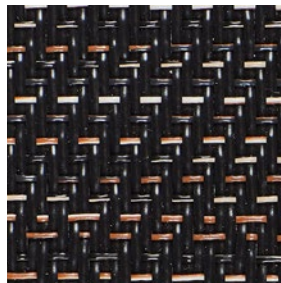
103 230

HERRINGBONE CINNAMON



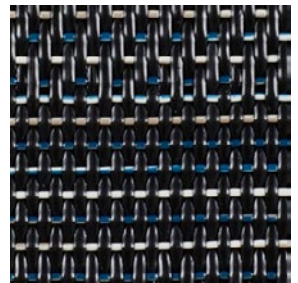
116 461

GRADIENT BROWN



116 623

GRADIENT BLACK



103 642



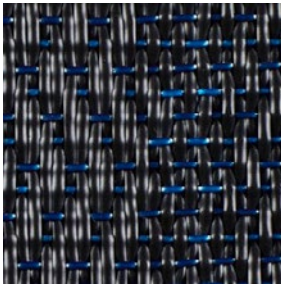


CLIC

## JEAN NOUVEL DESIGN

Collections Designers

BOLON BY JEAN  
NOUVEL DESIGN N°1

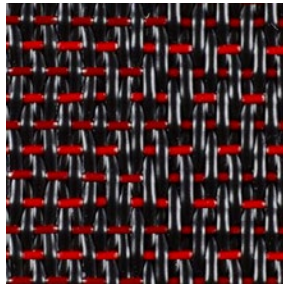


106 010



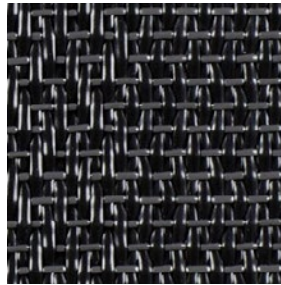
106 017

BOLON BY JEAN  
NOUVEL DESIGN N°2



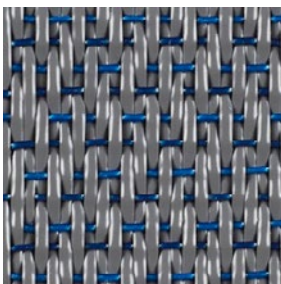
106 009

BOLON BY JEAN  
NOUVEL DESIGN N°3



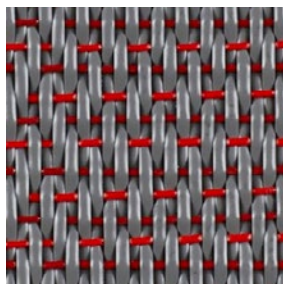
106 011

BOLON BY JEAN  
NOUVEL DESIGN N°4



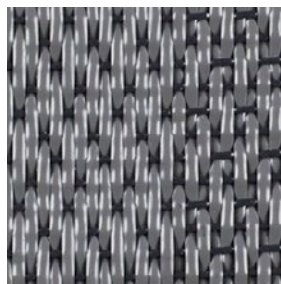
106 013

BOLON BY JEAN  
NOUVEL DESIGN N°5



106 012

BOLON BY JEAN  
NOUVEL DESIGN N°6



106 014



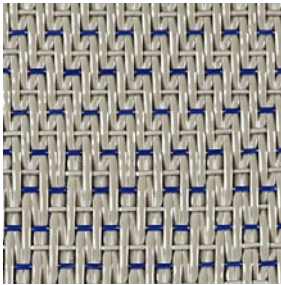
106 018



CLIC

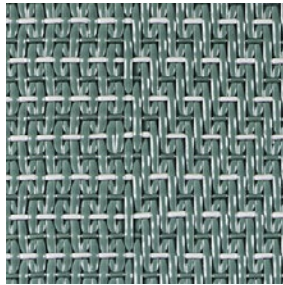
## PATRICIA URQUIOLA

LIGHT SASHIKO



111 776

SAGE SASHIKO



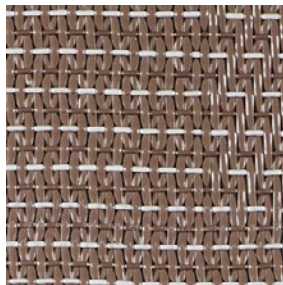
111 777

GREY SASHIKO



111 778

NUDE SASHIKO



111 779



CLIC

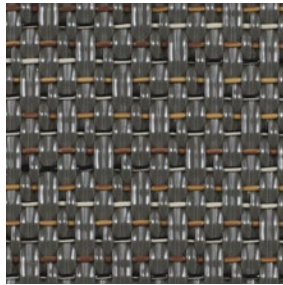
## EMERGE

ARISE



112 005 112 017

BILLOW



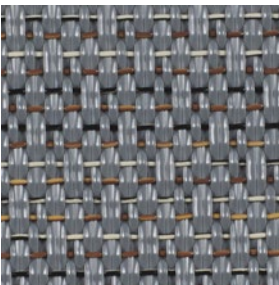
112 002 112 014

DRIFT



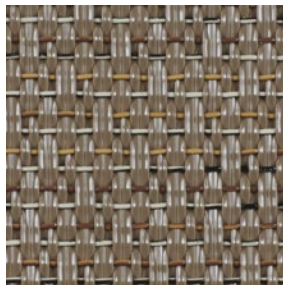
112 003 112 015

RIPPLE



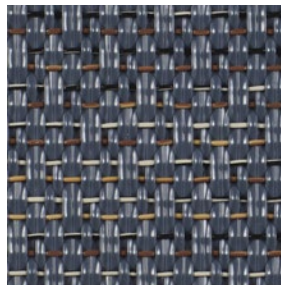
112 000 112 012

SWAY



112 004 112 016

SWIRL



112 001 112 013



CLIC

## ELEMENTS

ASH



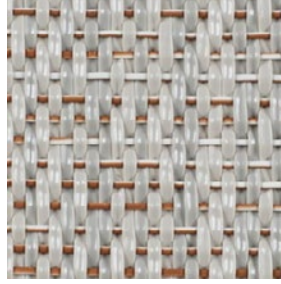
108 273 108 293

BIRCH



108 270 108 290

CORK



108 274 108 294

OAK



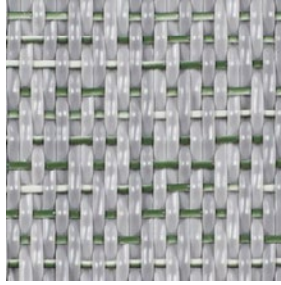
108 271 108 291

LINEN



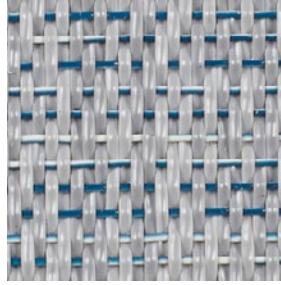
108 272 108 292

MARBLE



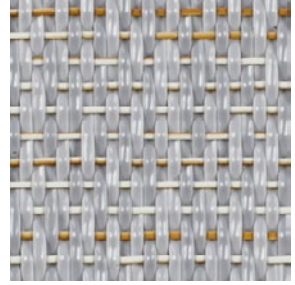
108 278 108 298

FLINT



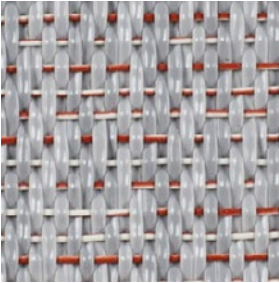
108 277 108 297

SILK



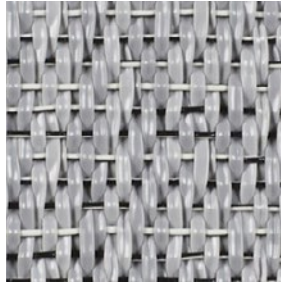
108 279 108 299

WALNUT



108 276 108 296

WOOL



108 275 108 295



CLIC

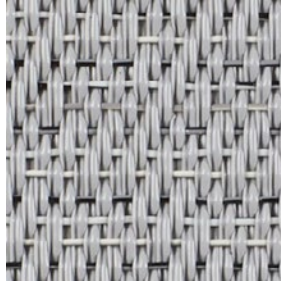
## ARTISAN

ECRU



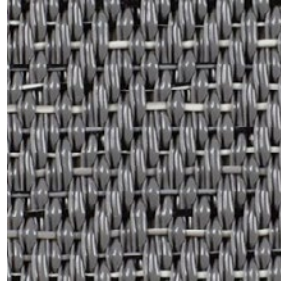
102 738 102 788

CONCRETE



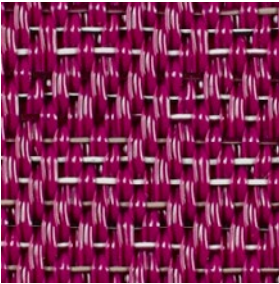
108 022 108 031

SLATE



102 739 102 789

FUCHSIA



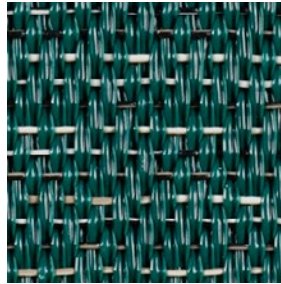
103 637 103 639

IVORY



103 591

JADE



108 024 108 033

QUARTZ



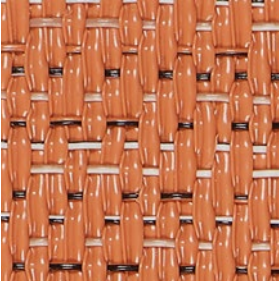
108 123 108 125



CLIC

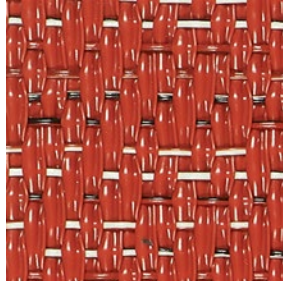
## ARTISAN

PLAY



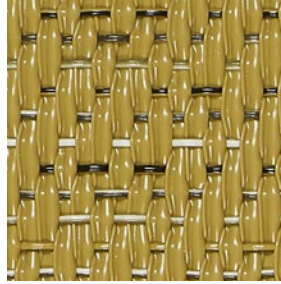
114 146 114 174

LOVE



114 145 114 173

SPRING



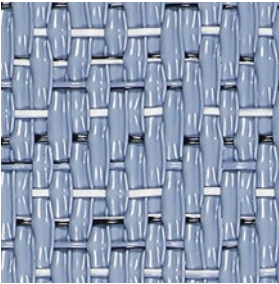
114 151 114 179

WILD



114 150 114 178

WATER



114 148 114 176

TRUE



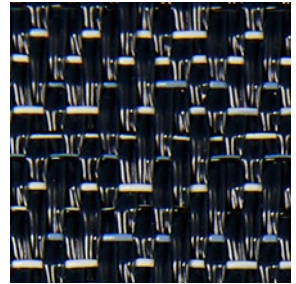
114 147 114 175

NOIR



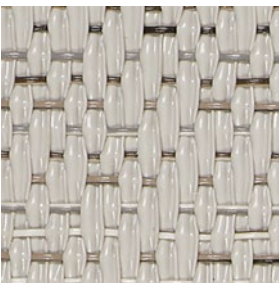
114 152 114 180

INK



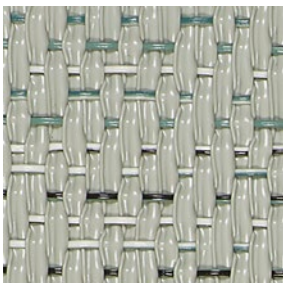
114 153 114 181

CHALKY



114 144 114 172

FRESH



114 149 114 177



CLIC

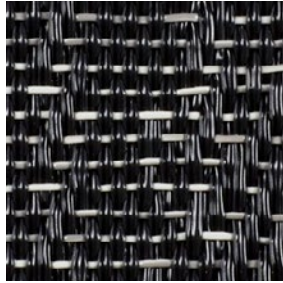
## SILENCE

BALANCE



106 223 103 706  

EMOTION



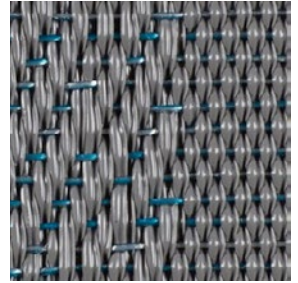
108 026 108 037  

GRACIOUS



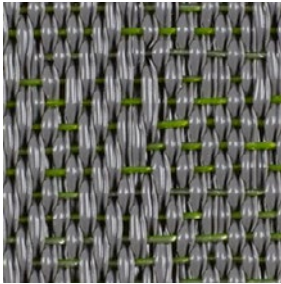
106 220 103 703  

ILLUMINATE



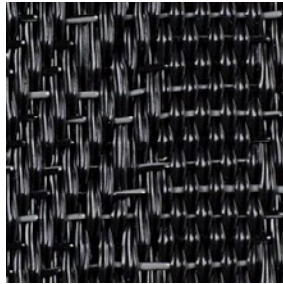
106 065 103 707  

OCULAR



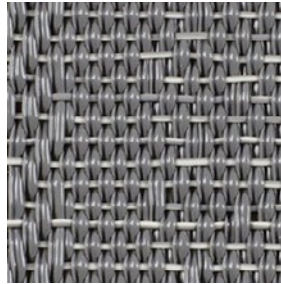
106 224 103 708  

PAUSE



108 025 108 036  

SENSE



106 222 103 705  

VISUAL



106 221 103 704  



CLIC

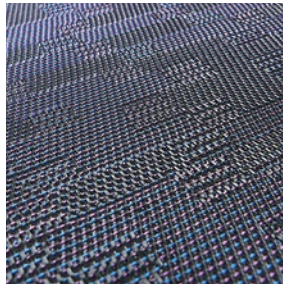
## TRULY

ANYTHING EVERYTHING



113 613

100%



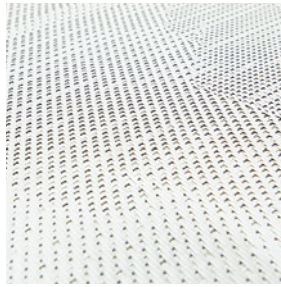
113 615



113 623



I SEE YOU



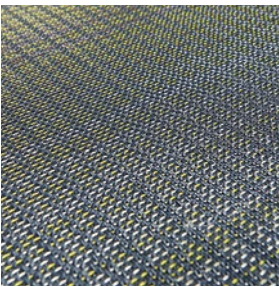
113 617



113 625



DISRUPT AND DISCOVER



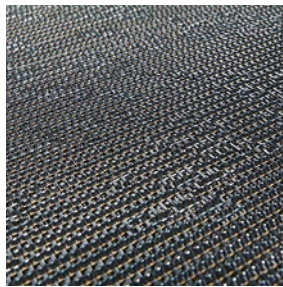
113 614



113 622



PRECIS



113 616



113 624





## INFORMATIONS TECHNIQUES CLASSE D'USAGE 33



**BOLON**



**DÉVELOPPEMENT DURABLE :  
DEPUIS 75 ANS, UN ENGAGEMENT  
À 100%**



Fabrication 100% Suédoise



100% des collections contiennent  
des matériaux recyclés

65% dans les rouleaux

72% dans les dalles

69% dans les rouleaux et dalles avec option acoustique



100% de PVC biosourcé issu de l'industrie de pâte à  
papier  
100% de craie recyclée issue de dalles de marbre



100% Énergie Renouvelable  
utilisée au cours du processus  
de production.



100% de la production à un impact climatique neutre.



100% du sol est sans phtalates

100% du sol est exempt de métaux lourds

100% des collections répondent aux exigences les plus  
strictes en matière d'émissions de COV



100% de l'eau de refroidissement utilisée lors la  
production est en circuit fermé  
Consommation d'eau = 0.











**Émission COV :** A+, M1

**Floorscore :** SCS-FS-02007 et SCS-FS-02240

**EPD et FDES :** Disponible sur demande

**NAAF :** Approuvé par l'association Norvégienne  
pour l'Asthme et les Allergies



|   |   | STANDARD   | FEUTRINE ACOUSTIQUE                      |                                      |
|---|---|--|--|--------------------------------------|
| Classification  | CSTB / UPEC   | U3 P2 E1/2 C1<br>U3s P3 E1/2 C1  |  |                                      |
| Garantie  |   | Garantie fabricant BOLON : 15 ans  |  |                                      |
| Poids   | ISO 8543  | rouleaux : 2,9 - 3,1 kg/m <sup>2</sup><br>dalles : 3,9 - 4,0 kg/m <sup>2</sup> | rouleaux et dalles :                     | 3,3 - 3,5 kg/m <sup>2</sup>          |
| Épaisseur   | ISO 1765  | rouleaux : 2,3 - 2,5 mm<br>dalles : 2,9 - 3 mm                                 | rouleaux et dalles :                     | 5 - 5,2mm                            |
| Largeur des rouleaux  | EN 426  |  | 2000 mm                                  |                                      |
| Longueur des rouleaux   | EN 426  |  | 25 m                                     |                                      |
| Dimension des dalles  | EN 994  | 500 x 500 mm<br>20 pièces par boîte / 5 m <sup>2</sup>                         | 500 x 500mm                              | 12 pièces par boîte /3m <sup>2</sup> |
|   | Chaises avec roulettes                                      | EN 985   | Pour une utilisation en continu          |                                      |
|  | Électricité statique  | ISO 1815**   | Conforme aux exigences                   |                                      |
|  | Chauffage au sol<br>(résistance thermique)                  | ISO 8302   | Convient à un chauffage au sol           |                                      |
|  | Indice de réduction a ux<br>bruits de chocs ΔL <sub>w</sub> | EN ISO 10140   | 9 - 14 dB*                               | 21 dB*                               |
|  | Coefficient d'absorption<br>acoustique (αw)                 | EN ISO 354   | 0,05*                                    | 0,15*                                |
|  | Résistance UV   | EN ISO 150-B02   | 8*                                       |                                      |
|  | Stabilité dimensionnelle                                    | ISO 2551<br>EN 986   | Conforme aux exigences                   |                                      |
|  | Résistance au feu   | EN 13501-1<br>ASTM E 648<br>ASTM E 662   | B <sub>fl</sub> -s1<br>Classe 1<br>< 450 |                                      |
|  | Antiglisse  | DIN 51130<br>EN 13893  | R9<br>> 0,3                              |                                      |
|  | Certification CE  | EN 14041   | N° 0402-CPR-419005                       | N° 0402-CPR-419013                   |
|   | Fabrication   |  | Suède                                    |                                      |

\* Valeur usine - \*\* ISO 1815 remplace ISO 6356 - Les dessins de certaines collections sont protégés.

**Choix des couleurs :** le choix des couleurs et des motifs influe sur l'entretien des sols. Pour les locaux à trafic intense, les entrées, les escaliers, les espaces de bureaux, de circulation, magasins, restaurants, préférer un coloris chiné plutôt qu'un coloris uni, très clair ou très foncé.

**BOLON est lavable, lessivable, brossable.**

